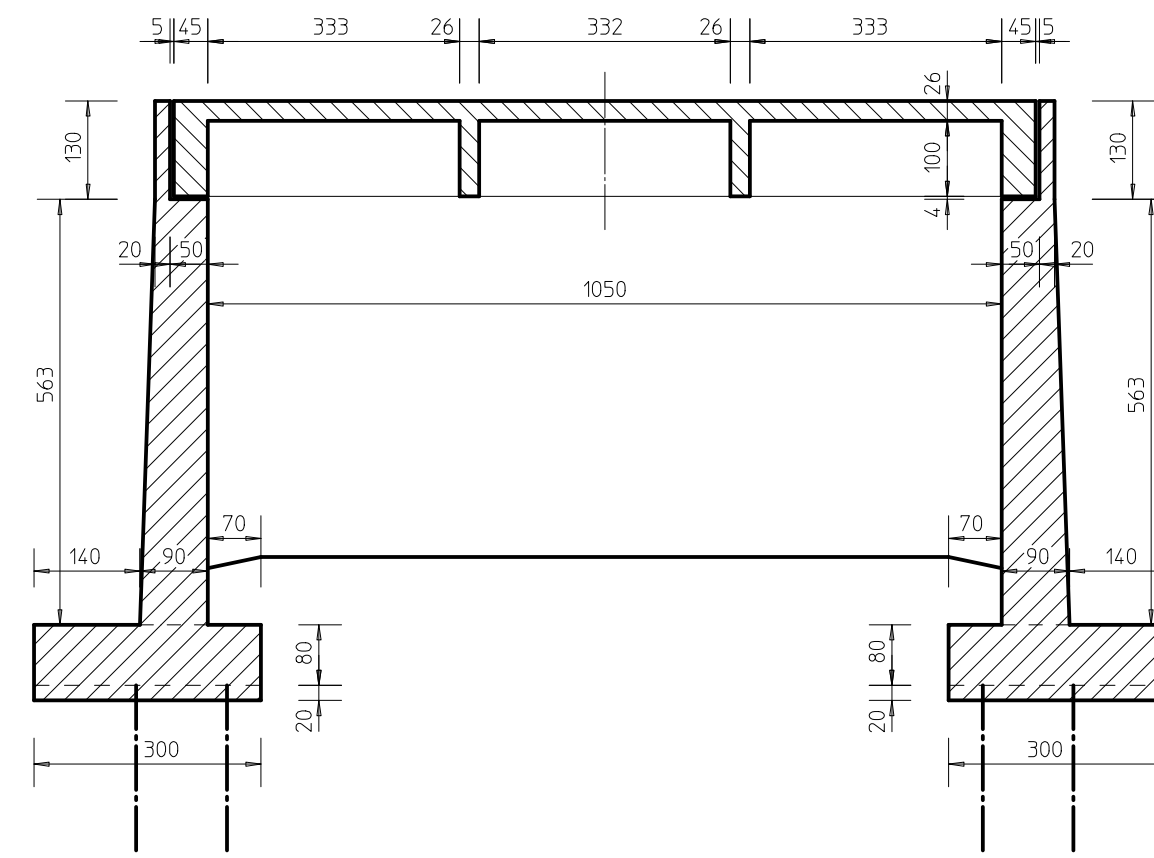
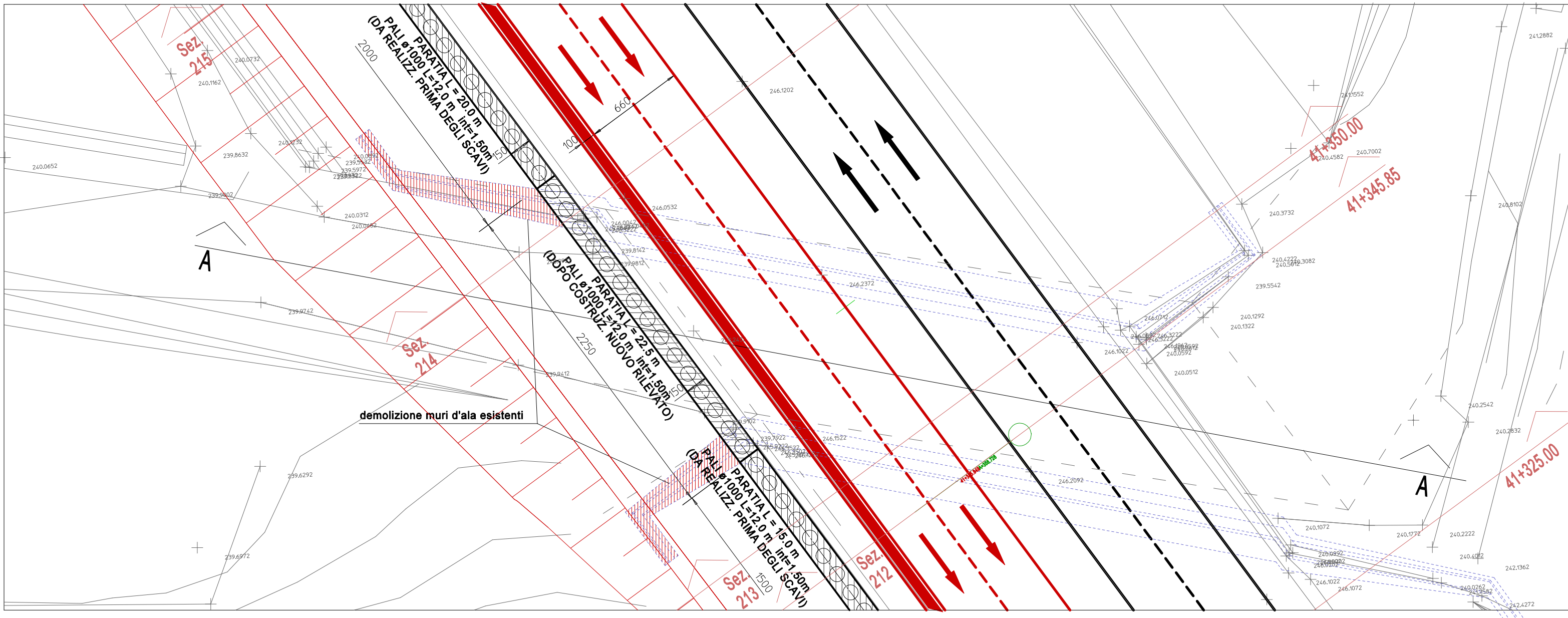


SEZIONE TIPO SOTTOPASSO ESISTENTE

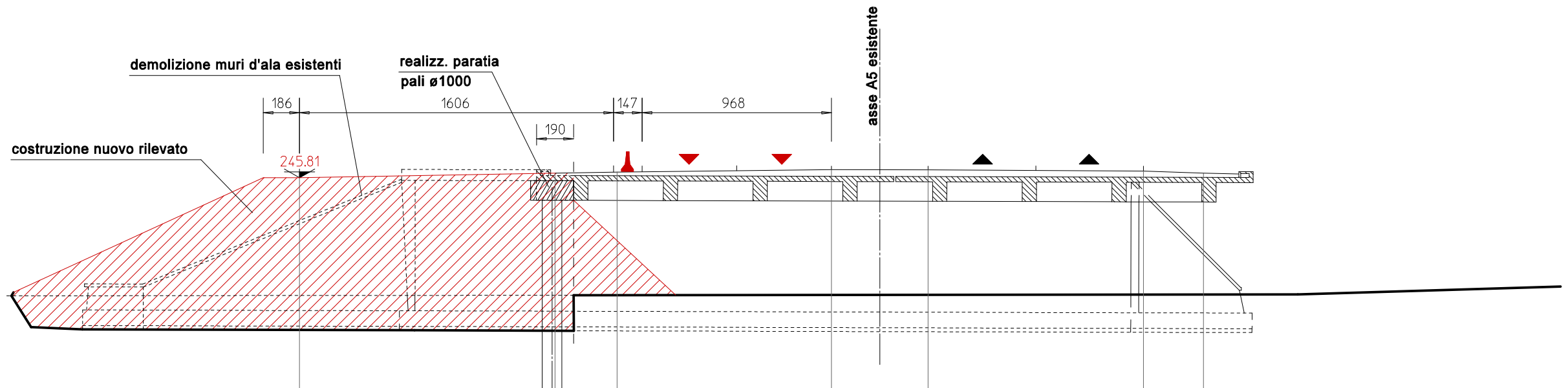
SCALA 1 : 100



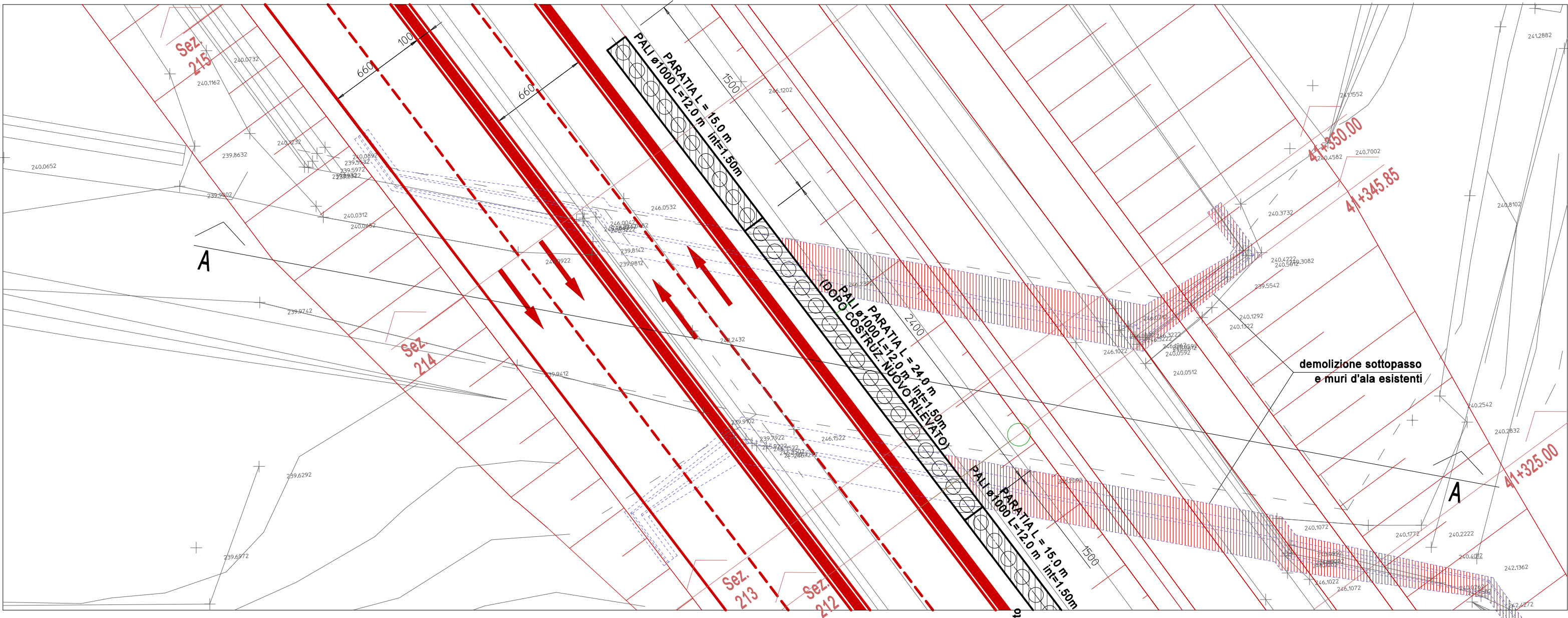
FASE 2



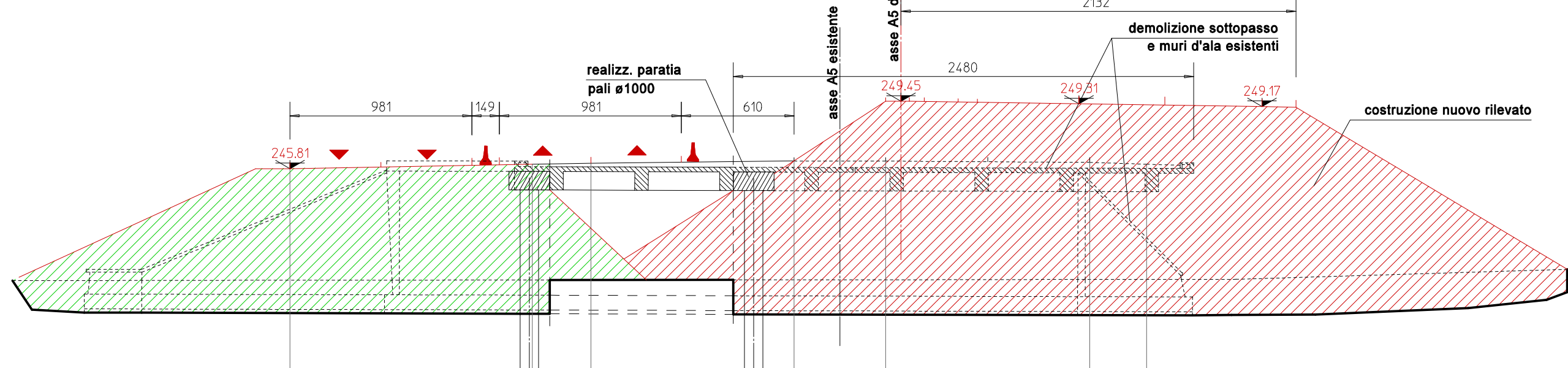
Sez. A-A
Q.Rif. : 235.00



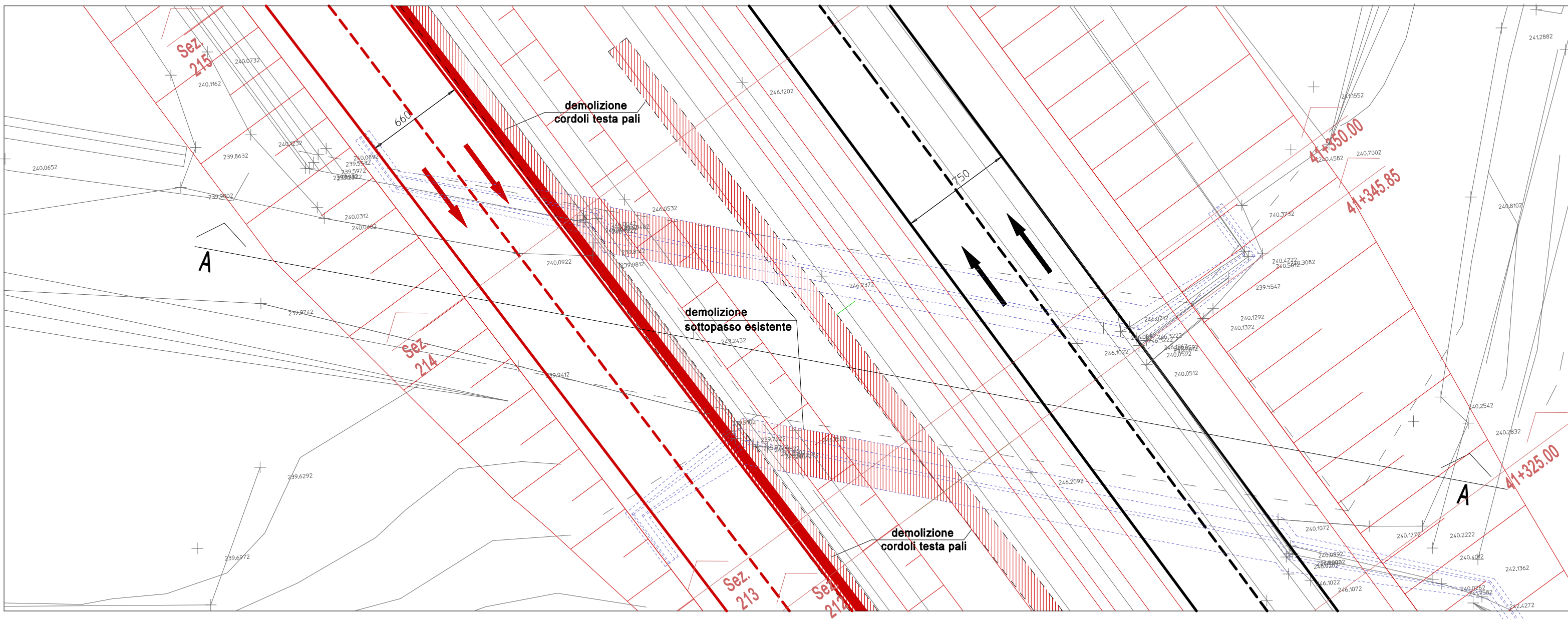
FASE 4



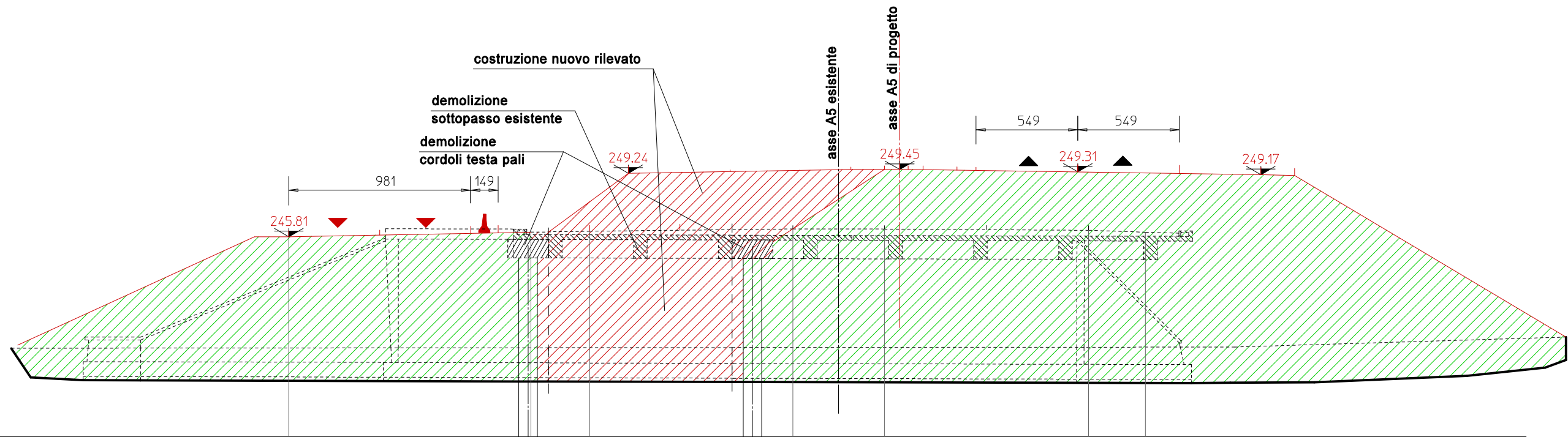
Sez. A-A
Q.Rif. : 235.00



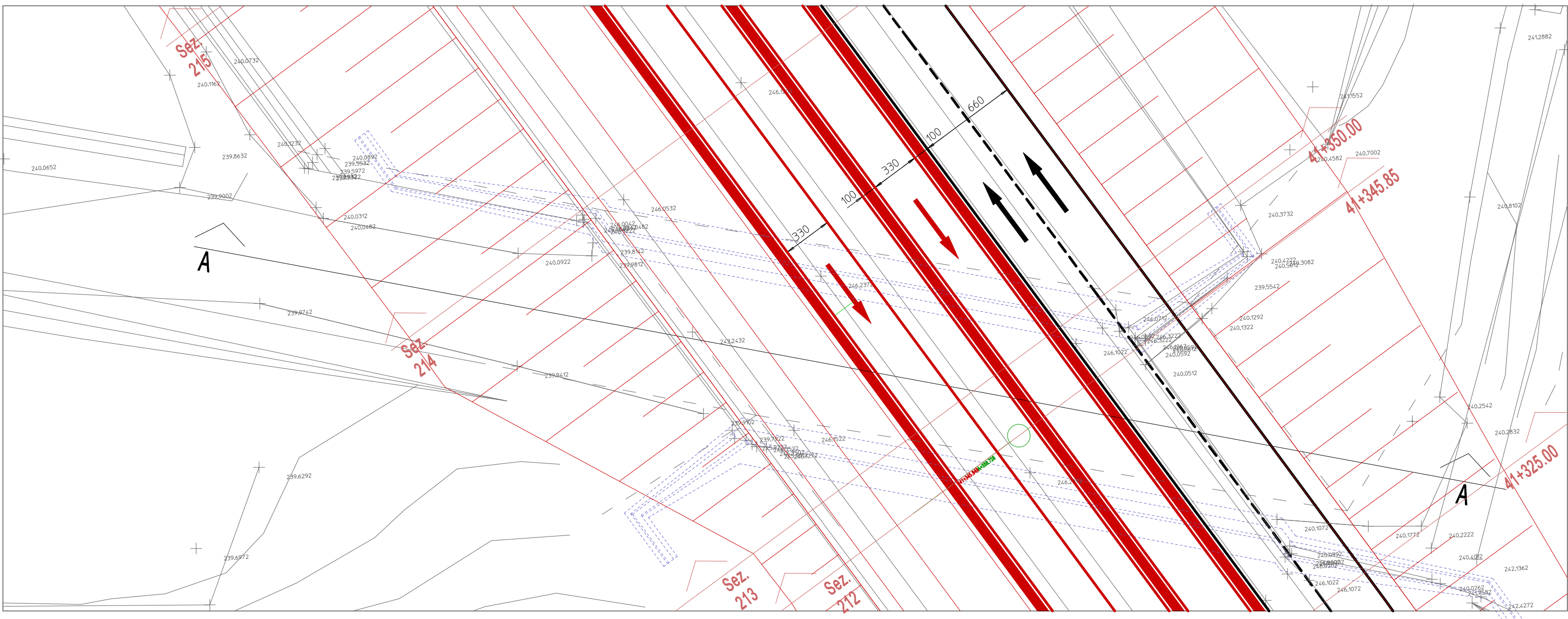
FASE 5



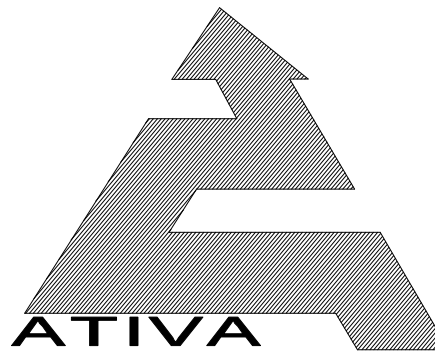
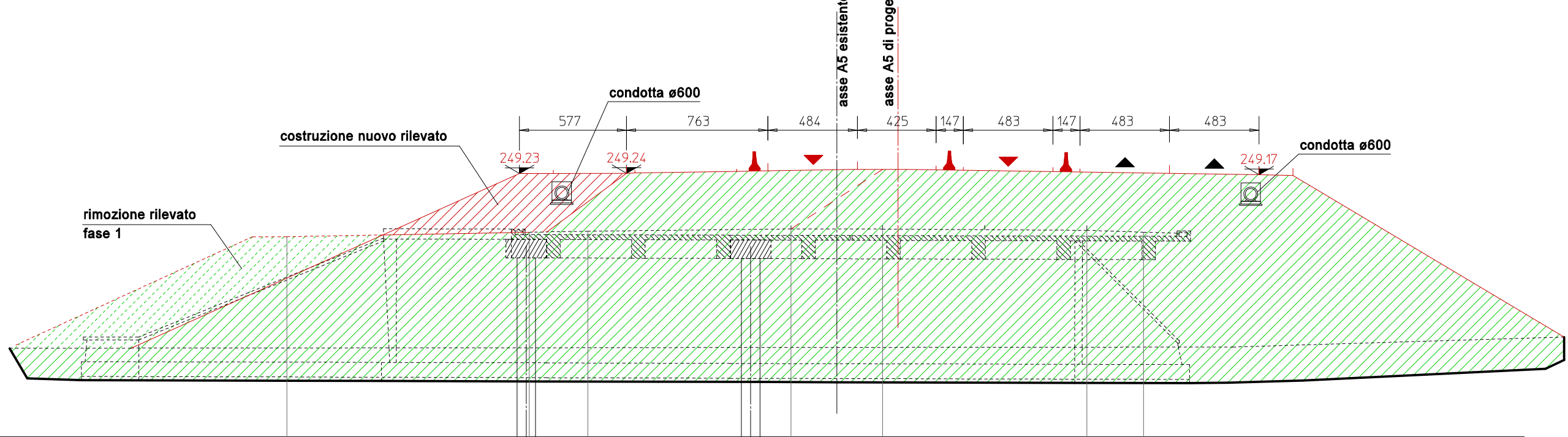
Sez. A-A
Q.Rif. : 235.00



FASE 6



Sez. A-A
Q.Rif. : 235.00



TORINO - IVREA - QUINCINETTO
IVREA - SANTHIA'
SISTEMA AUTOSTRADALE
TANGENZIALE DI TORINO

VISTO per FATIVA S.p.A.



Amministratore Delegato
Dott. Ing. LUIGI CRESTA

**AUTOSTRADA A4/A5 - A5 TORINO QUINCINETTO
IVREA SANTHIA'**

**NODO IDRAULICO DI IVREA
2° FASE DI COMPLETAMENTO**

PROGETTO DEFINITIVO

**PARTE STRUTTURALE - SOVRAPPASSI E SOTTOPASSI
DEMOLIZIONE SOTTOPASSO S.P. 69 LESSOLO-BANCHETTE
AL km 41+351
DISEGNO D'INSIEME**

IL PROGETTISTA	REDATTO	CONTROLLATO	APPROVATO
IGEAS P. Einaudi	IGEAS M. Barale	IGEAS M. Barale	ATIVA ENGINEERING V. Palmisano
DATA GIUGNO 2012	REVISIONE	DATA	
SCALA 1 : 250			
UFFICIO	COMMESSA	N° PROG.	FASE
SSP0101A05000PDSTR41100--			